

*Istanbul Gelişim
University*

School of Foreign Languages Monthly Bulletin

November 2021

WHAT YOU WILL READ IN THIS MONTH'S BULLETIN

- **Latest News**
 - **A Student Interview**
 - **Sample Paragraphs
From Our Students**
 - **Interview with Our
Head Coordinator of
Planning Unit**
 - **Some Tips on
Language Skills**
 - **Our Instructor Amina
Benkhalifa Completed
Her Master's Degree**
-



LATEST NEWS FROM OUR SCHOOL

- SOFL created supplementary classes on Saturdays for second placement students, recent/late registered students as well as other students who might need some extra help. All students are welcome to attend our supplementary classes.
- November was relatively a busy month for our school. Students had conducted their first online quiz (Main Course) and one week later they had their first face to face quiz.
- Track I of the preparatory program ended on Friday 26 November 2021
- We received many new students registrations and new classes were opened for them.
- Proficiency exams (YET 7,8,9,10 and had been taken place).
- Our colleague Amina Benkhalifa has completed her Master degree in English literature successfully; our warm congratulations to her.

SATURDAY SUPPLEMENTARY CLASSES



Most students relax on the weekend, but hard-working ones don't give up on learning even on Saturdays!

Here at IGU SFOL, we offer Supplementary Classes to our students every Saturday. The goal is to provide an opportunity for them to learn new things or practice the lessons they've already had to make sure they are on the right track to succeeding and continuing their education in their own departments.

At first, the classes were offered only to new students but now all students are welcome! Come join your friends for an exciting and informative weekend at IGU SFOL. Your teachers can't wait to see you! Here is the QR CODE

OR

[click here](#)



Student Interview

We have interviewed one of our smart and hard-working Prep students. We focused on her opinion as about the learning process.

Please start by introducing yourself.

Hello everyone and hello teacher. My name is Rümeyşa Ayten, I am 19, my department is Civil Aviation Engineering. I'm studying prep school this year.

Why did you choose this university?

I heard about Istanbul Gelisim University from many friends who recommended it to me. Then I checked IGU on the internet and found so many good comments and reviews were amazing. I had a really good impression from that. Two of my close friends study at IGU. I interviewed them a couple of times, trying to get first-hand information about the teachers, the subjects, the life at the college and everything. And I love what they say about the quality of lectures, the interaction with both teachers and students.



What do you expect yourself to be after finishing your English preparation year?

I think I will be more confident speaking English, ready for my department classes that need a good command of English. It's easy to see just how important English is around the world. We, students will graduate into an increasingly interconnected world. The global economy necessitates that students understand other languages and cultures in order to secure the most competitive careers.

With a good command of English, I can enhance my career opportunities. Also I can enjoy watching English films and series.

Sample Student Review 1

SUBJECTIVE PARAGRAPH EXAMPLE

Witcher 3 Blood and Wine Review

Subjective writing, which is writing that you cannot evaluate, calculate, or verify. Subjective writing might express feelings, opinions, and judgments. This would come in handy for writing a personal essay or an opinion column for a paper, but should not be used when the goal is to simply inform the audience.



Witcher 3 is an open world role playing game focused on story and character development. Its heavy-dialogues and rich scenario is beneficial for both listening and reading skills.

There's always been an element of finality to The Witcher. Geralt is a man out of time, both figuratively, and aware that the end isn't going to be far off. At some point he won't be strong enough to ply his trade. At some point, he'll be just a little too slow to dodge out of the way of the incoming griffin, and his reward for a lifetime of heroism, compassion and saving the world will be a painful, lonely, and likely little-mourned death on some cold hill somewhere. Mostly, he seems okay with that.

But CD Projekt RED, which has ridden this series from obscurity to the top-tier of RPG developers, clearly aren't. Blood And Wine is their parting gift - not to us, but to Geralt himself. A big 'thank you' present wrapped in a bow and slipped with love between universes.



Sample Student Review 2

OBJECTIVE PARAGRAPH EXAMPLE

No Man's Sky Review

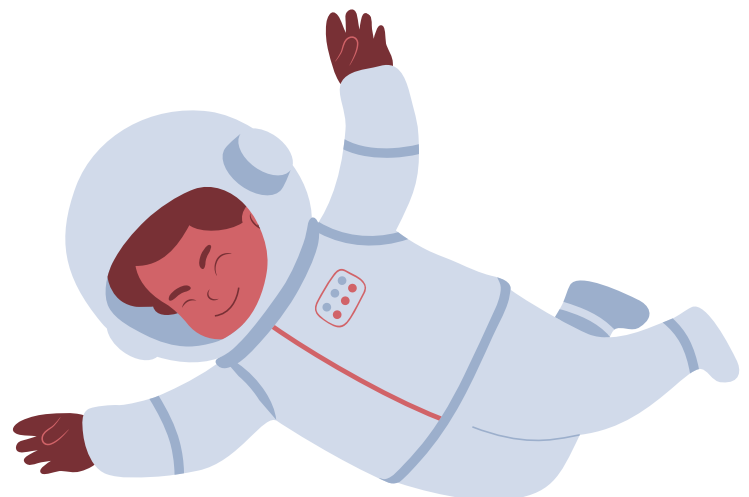
Objective writing is writing that you can verify through evidence and facts. If you are writing objectively, you must remain as neutral as possible through the use of facts, statistics, and research. This type of writing is best used when you as a writer need to present unbiased information to an audience and then let them determine their own opinion.



No Man's Sky is an exploration-based survival game released in August 2016. It's an open space game in which gamers explore planets, their flora and fauna; so it's really beneficial for vocabulary-building.

As you go you can scan the worlds for their geology, flora and fauna, and upload details to a database where you receive credit should anyone else ever stumble upon the same place, and receive Units for you to spend.

You can buy bigger and better ships, a new multi-tool, and incrementally improve what you've got with upgrades within their inventory slots. Then it's up to you, really - race for the centre of the universe, chase after some ambiguous deity, or enjoy yourself flitting around at random, learning the languages of three alien races, improving your gear, and naming every planet you find.



SOFL UNIT INTERVIEW

A member of our staff, UTKU TONEL was interviewed. He explained his duties as the Head Coordinator of Planning Unit of SFOL and he gave us useful information about his duties in this unit.

Would you please introduce yourself to our readers?

I'm Utku. I work for the Planning and Material Development Unit at the School of Foreign Languages, and I'm one of the three members of the unit, along with A. Benkhalifa, and A.A.Khameneh

I want to ask you some questions about the Material and planning Unit and the process of preparing the tracks pacing. Let's start with what are the duties of your unit?

Our duty is mostly about curriculum and instruction: we design and improve the syllabus used in the English Preparatory Programme, we decide and plan how and what to use in class as instructional materials. Additionally, we review all tests for curriculum alignment.

What are the challenges that you may face sometimes during preparing the tracks pacing documents?

We have standard documents which we call "pacing guides" developed separately for each course in the curriculum. It allows for standardized instruction across all learner groups in the English Preparatory Programme. They include everything from what to teach, when to teach, to what homework to assign, etc. The hardest part of planning such an operation is trying to consider different qualities, needs, strengths and weaknesses of thousands of learners while developing the pacing guides which enables effective instruction.

What are the other units that you usually work with and for which purposes exactly?

We have constant contact with the Coordinators' Office, since they regularly track and monitor instruction in all groups. Besides, they review all pacing guides before we share them with other instructors. In addition, we collaborate with the Assessment and Evaluation Unit as well, since we provide feedback on all tests they construct.

What are your ideas to develop this unit in the future?

This year, we have introduced curriculum maps into the pacing guide documents, which we hope that it will help Assessment and Evaluation Unit in constructing tests, and raise awareness in instructors regarding the curriculum; enabling them to see what the focus of each course is at a glance. As a unit our main task is to make learning more effective for students while making it clearer (and preferably problem-free) for instructors. We hope to continue working toward such a goal.

Thank you so much Utku Hoca for sharing with us these pieces of valuable information. We wish you best of luck with your unit.

Thank you.

Don't lose your language skills!

Watching films and series is one of the best ways to retain and develop the language skills and considered as a hobby for many of the students.

We would like to recommend this month a famous English series that would be proper for students

Mind Your Language

Mind Your Language is a British Sitcom that premiered on ITV in 1977. It was produced by London Weekend Television and directed by Stuart Allen. Three series were made by LWT between 1977 and 1979 and briefly revived in 1985 (or 1986 in most ITV regions) with six of the original cast. The series shows people of different countries with different social background, religions, and languages existing in the same classroom, learning English as a foreign language.



SOFL Instructor Amina Benkhalifa has completed her Master's degree in English Language and Literature successfully

Thesis was defended under the title:

A PSYCHOANALYTICAL READING BASED ON STUDY OF THE

FEMALE URGE FOR SUBJUGATION BETWEEN THE 15th AND THE 21 ST CENTURY IN SHAKESPEARE 'S HAMLET, ALFRED HITCHCOCK'S REBECCA AND JOSÉ SARAMAGO'S BLINDNESS.

What are the erroneous beliefs, psychological problems, traumas, or parenting blunders that are accountable for females' self-demotion and internalization of subjugation?

To what extent women usually knuckle under vulnerability and victimization to seek comfort and outlet for their passivity and powerlessness?

Abstract:

Within this study, the feminine psyche and the experiences accountable for its tendency for subjugation, self-demotion and ruination is aspired to be understood. Psychoanalysis would serve to investigate the three female's minds, Ophelia, Rebecca and the Doctor's wife, to give us a rational understanding of their psyche, experiences, motives, and actions. These female characters were blind by their insecurities and dependency, believing that keeping quiet and yielding would make them appreciated for their patience and sacrifices. However, the three male characters (Hamlet, Maxim, the Doctor) have not failed the typical patriarchal behaviour to prove themselves ungrateful, whether by abandoning, cheating, or taking women for granted. In addition, in this thesis the thin line between feminine vulnerability and victimization, which keeps women believing that they are born and designated to subjugation will be studied. Likewise, it will discuss major feminine complexes like The Cinderella complex, The Electra complex, Victim feminism, all of the female roadblocks to independence.

Keywords: Subjugation, Dependent, Sacrificing, Demotion, Internalized.

COVID-19 IS STILL OUT THERE...



PROTECTING FROM THE VIRUS IN OUR HANDS



COVER YOUR MOUTH AND NOSE WITH DISPOSABLE PAPER TISSUES DURING COUGHING AND SNEEZING. IF THERE IS NO TISSUE, USE THE INNER SIDE OF YOUR ELBOW.



AVOID CLOSE CONTACT SUCH AS HANDSHAKING AND HUGGING.



AVOID CROWDED PLACES AS MUCH AS POSSIBLE.



DO NOT TOUCH YOUR MOUTH, NOSE AND EYES WITH DIRTY HANDS.



WASH YOUR HANDS WITH WATER AND REGULAR SOAP FOR AT LEAST 20 SECONDS.



USE HAND SANITIZER IF THERE IS NO WATER AND SOAP.